

Crawley's Economic Recovery Taskforce

GATCOM Meeting – 14 October 2021

Clem Smith

Head of Economy and Planning



Crawley A PLACE TO
INVEST

FROM Crawley's economic success story

Crawley's Economy:

- Grew by 27% since 2013-19, one of the fastest in south east
- Was worth over £6 billion PA pre-pandemic
- 26% of West Sussex economic output, just 2% of land mass

Crawley's jobs base:

- Grew by 16% since 2013-19
- The highest employment rate in the country (2017)
- Reached 103,000 jobs
- The highest job density in country outside central London.

Crawley's business base

- Grew by 35% between 2013-19 (SE average: 23%)
- Has the highest economic productivity per worker in the Coast to Capital sub-region: £45,000 per capita.



TO Crawley's COVID 19 Economic Crisis

Aviation Industry collapse

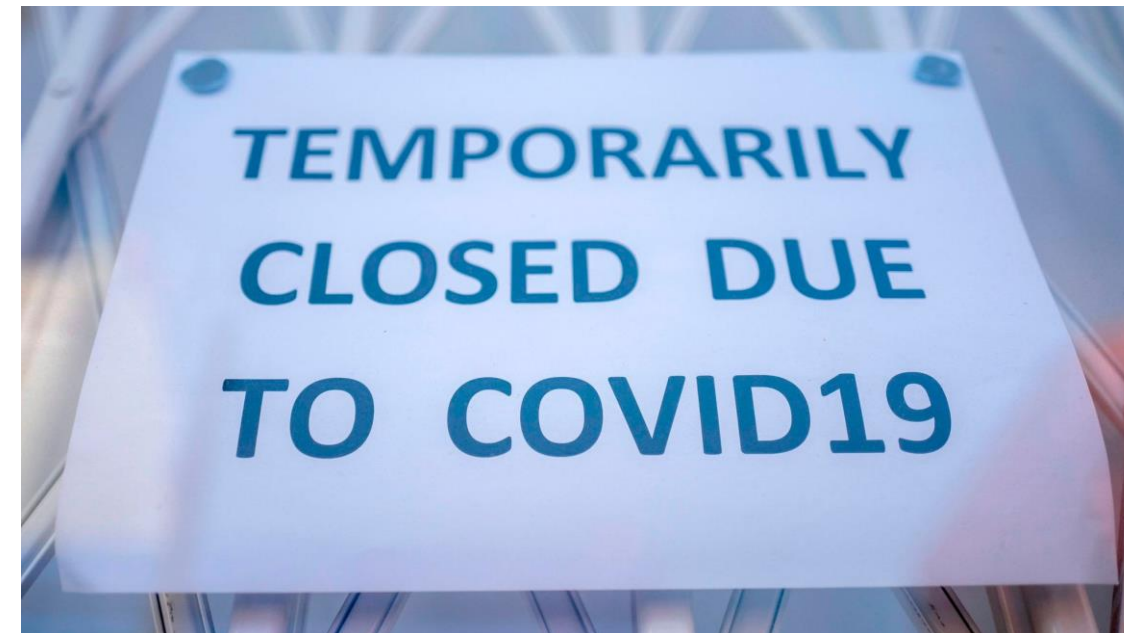
- Passenger numbers at Gatwick fell by 78% in 2020
- South Terminal closed since spring 2020
- 68% reduction in “on airport” jobs – 16,000+

Crawley's economic crisis at its height:

- Claimant count more than trebled to 9% (Mar 21)
- Crawley in worst 10% of areas for unemployment claimant count
- Youth claimant count peaked at nearly 14%
- Sept 2020: 1 in 3 Crawley workers on furlough (25,800)
- Top three furloughed sectors in Crawley:
 - Accommodation and food services
 - Transportation and storage
 - Administrative and support services

Predictions were:

- Centre for Cities: “57% of Crawley's jobs base at risk”
- (17,000 Crawley people in aviation related jobs)
- Risk of 42% year on year drop in economic output



The Crawley Economic Recovery Taskforce / Town Deal Board

- 50+ representatives - 38 business and community stakeholders / public bodies
- Chair local business rep: Chris Maidment
- Community reps include: CAB; Crawley Town Community Foundation; Crawley Community Action; CVS; Crawley Community Youth Services; St Johns
- Local MP: Henry Smith
- Public body reps: CBC; WSCC; Sussex Police; NHS; DWP / JCP; Arts Council; MHCLG / BEIS
- Other business reps include: Gatwick Airport; Gatwick Diamond Business; LEP; Sussex Chamber of Commerce; Barclays, Nat West; FSB; DMH; SHW; Vail Williams
- **Meets every 2 months**



CRAWLEY ECONOMIC RECOVERY TASKFORCE- TERMS OF REF:

- Review and assess Crawley's economic crisis and its "real time" impact
- Oversee development of Economic Recovery Plan and Town Investment Plan
- Engage community reps and stakeholders in the Recovery Plan
- Facilitate development of priority Towns Fund schemes to boost recovery
- Monitor delivery of regeneration schemes (Towns Fund)



Crawley Towns Fund Programme – (£21.1m)

URBAN REGENERATION

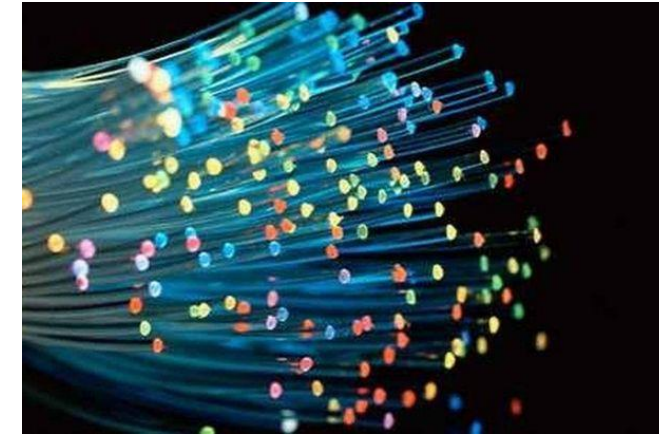
- Manor Royal environment upgrades
- “Green homes” retrofit programme
- Town Centre cultural quarter

SKILLS AND ENTERPRISE

- Crawley “Fusion” Innovation Centre
- “Invest in Skills for Crawley” Programme
- Green-tech business grants / infrastructure
- Commercial Eastern gateway (town centre)

CONNECTIVITY

- Transformed Bus Station (town centre)
- Arterial Commuter Cycle Route (Town centre to Gatwick Airport)
- “Gigabit” Manor Royal



Crawley Economic Recovery Plan

- A vision at 2050 for Crawley's future socio-economic prosperity
- A clear path for recovery from COVID-19 economic crisis
- A marker to Crawley's formidable reputation for economic productivity
- One strategic framework for recovery under which sit:
 - Town Centre Regeneration Programme;
 - Crawley Growth Programme;
 - Employment and Skills Programme;
 - Crawley Towns Fund Programme;



Crawley's Economic Recovery Plan 2022-2037

- **A “One Town” Vision for Crawley in 2050:**

“A modern, vibrant and healthy exemplar digital town; transformed net zero carbon economy; the south east’s leading digitally enabled and mixed use innovative Business Park at Manor Royal; an empowered resident workforce; high quality amenities, bustling neighbourhood parades; extensive sustainable homes, transport, business”

- **Strategic priorities 2022 - 2037:**

- Diverse and resilient economy (over reliance on aviation)
- Green transformation (the capacity to decarbonise)
- Town centre renewal (3,000 homes; “commercial gateway”)
- Skills for the future (FE / HE infrastructure / Skills pathways into jobs, including at the Airport)
- Connected Crawley (active travel / BRT links to Airport)

- **Public consultation: 9 July to 11 October**



Questions?



Crawley A PLACE TO
INVEST